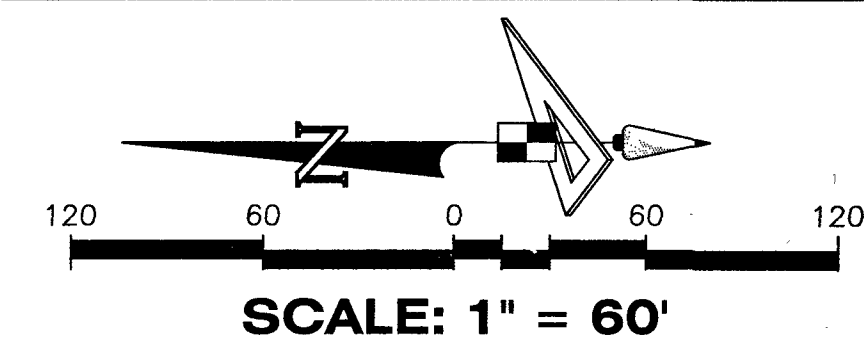
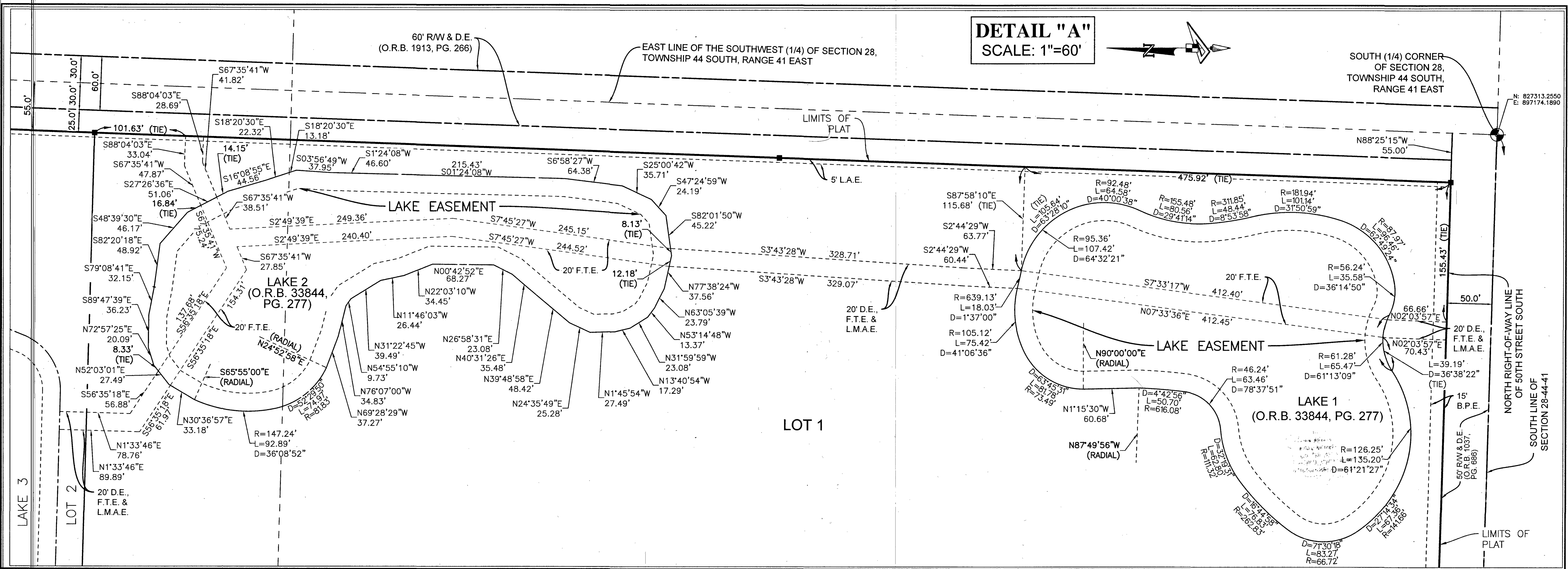


# WINDSOME FARMS REPLAT

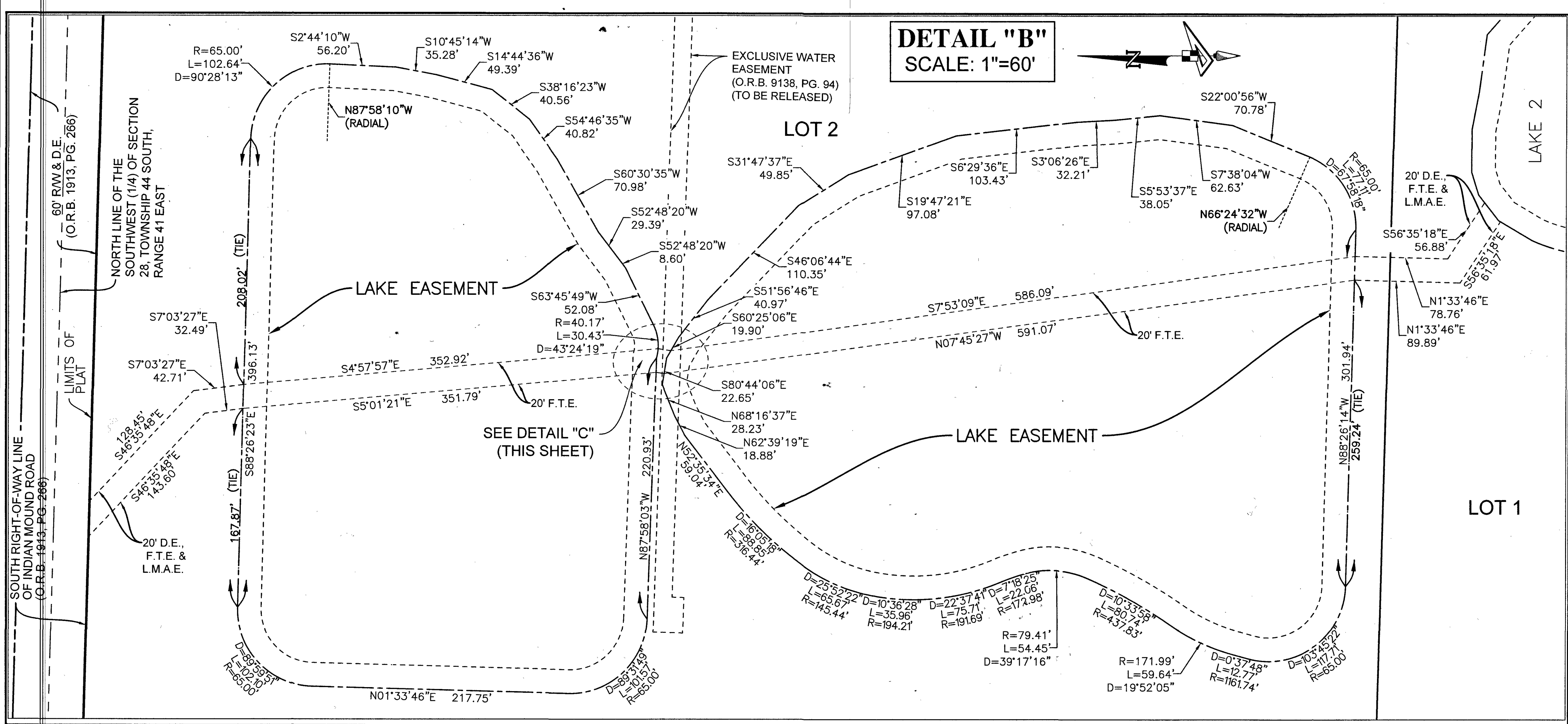
BEING A REPLAT OF LOT 1 AND LOT 2, WINDSOME FARMS, ACCORDING TO THE PLAT THEREOF AS RECORDED IN PLAT BOOK 134, PAGES 89 THROUGH 91, INCLUSIVE, OF THE PUBLIC RECORDS OF PALM BEACH COUNTY, FLORIDA, ALL LYING IN SECTION 28, TOWNSHIP 44 SOUTH, RANGE 41 EAST, VILLAGE OF WELLINGTON, PALM BEACH COUNTY, FLORIDA.



# 45



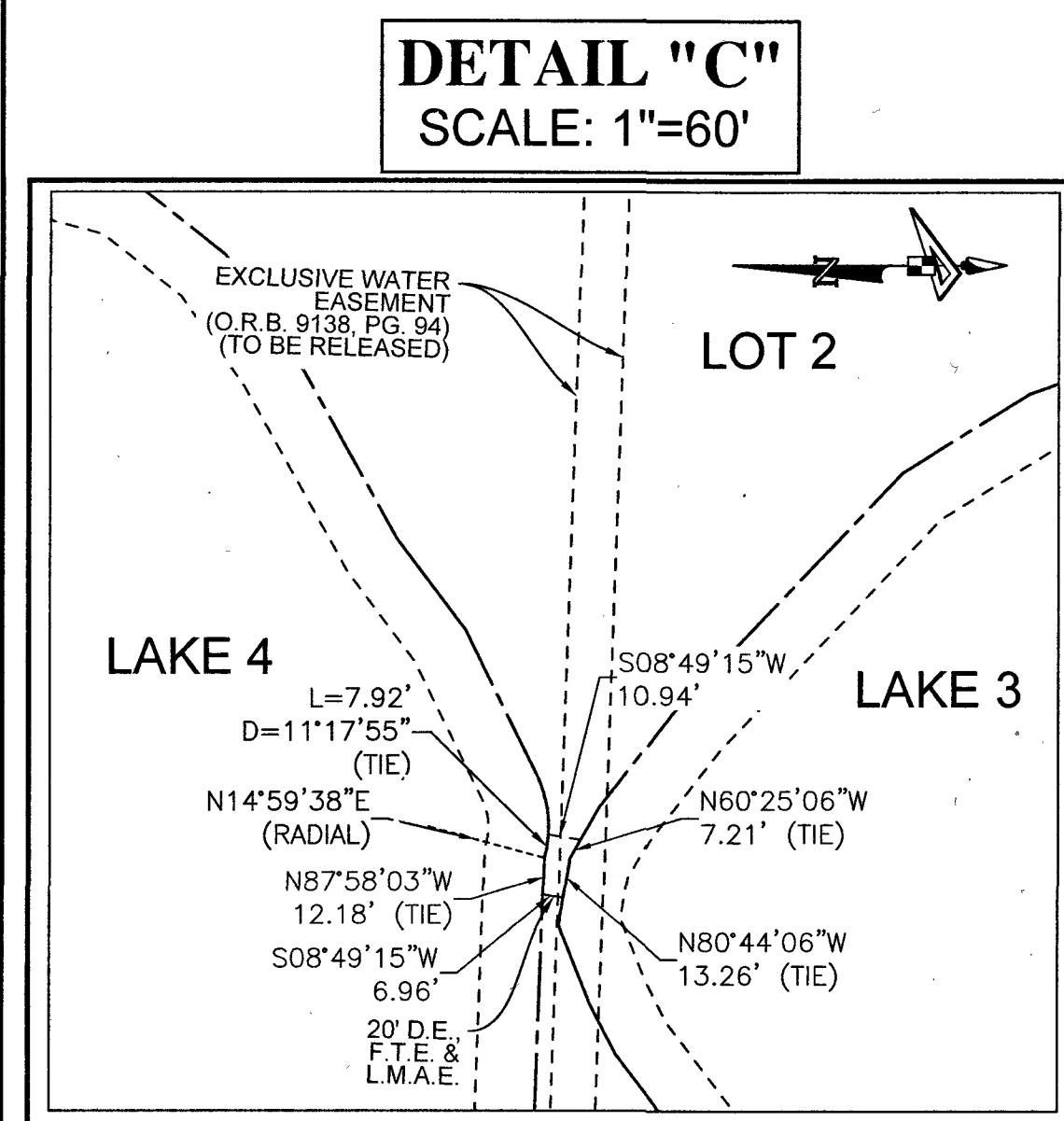
**DETAIL "A"**  
SCALE: 1"=60'



**DETAIL "B"**  
SCALE: 1"=60'

**LEGEND**

P.O.B. ----- POINT OF BEGINNING	D ----- CENTRAL ANGLE
P.O.C. ----- POINT OF COMMENCEMENT	L ----- ARC LENGTH
P.B. ----- PLAT BOOK	R ----- RADIUS
D.B. ----- DEED BOOK	(C) ----- CALCULATED
O.R./O.R.B. ----- OFFICIAL RECORDS BOOK	(D) ----- DEED
PG./PG(S) ----- PAGE(S)	U.E. ----- UTILITY EASEMENT
R/W ----- RIGHT-OF-WAY	D.E. ----- DRAINAGE EASEMENT
C.C.R. ----- CERTIFIED CORNER RECORD	B.E. ----- PRIVATE BRIDLE EASEMENT
P.B.C. ----- PALM BEACH COUNTY	L.M.E. ----- LAKE MAINTENANCE EASEMENT
L.B.E. ----- LANDSCAPE BUFFER EASEMENT	L.M.A.E. ----- LAKE MAINTENANCE AND ACCESS EASEMENT
P.B.E. ----- PUBLIC BRIDLE EASEMENT	L.A.E. ----- LIMITED ACCESS EASEMENT
28-44-41 ----- SECTION-TOWNSHIP-RANGE	L.E. ----- LAKE EASEMENT
PRM ----- PERMANENT REFERENCE MONUMENT	F.T.E. ----- FLOW THROUGH EASEMENT
----- SET 4"x4" CONCRETE MONUMENT WITH 2" ALUMINUM DISK STAMPED "PRM LB 7768"	



**DETAIL "C"**  
SCALE: 1"=60'



4152 W. Blue Heron Blvd. Phone: (561) 444-2720  
Suite 105 www.geopointsurvey.com  
Riviera Beach, FL 33404 Licensed Business Number LB 7768  
Sheet No. 3 of 3 Sheets